



Interface Inagh, Recess, Co. Galway.

Project; On-Campus Residential Artist's Studios.

Preliminary Design Proposals

August 2022

INTERFACE INAGH

A residential retreat for visual artists, writers, dancers and musicians.

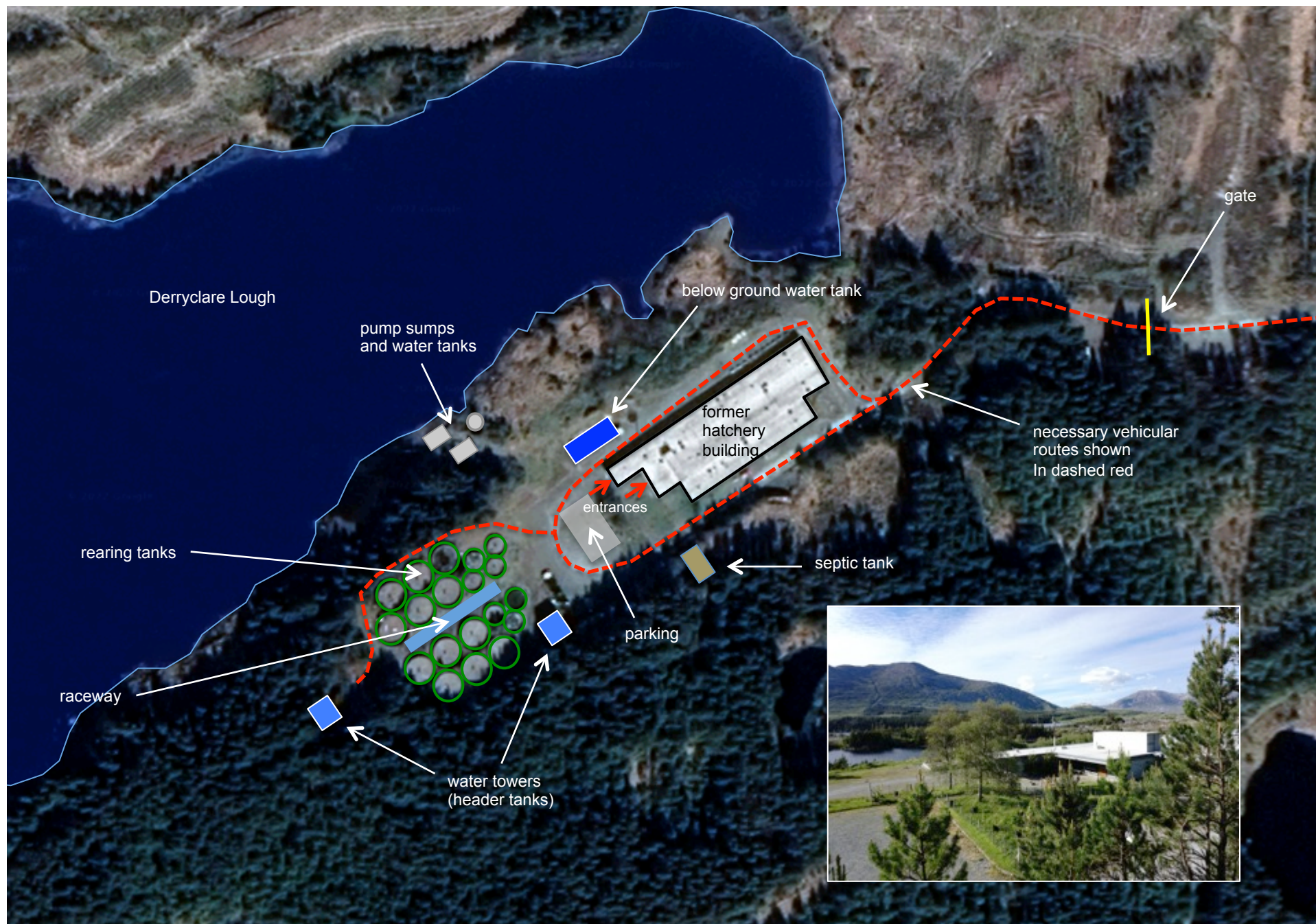
- A place for creativity.
- A place to connect with nature and the *savage beauty* of the place.
For it to be inspirational and enhance creativity; woods, water, and mountains. Sky, light, wind, sun and rain.
- A place to have time, brain space and emotional capacity.
- A place for personal retreat, peace and serenity and for catalysing opportunities, collaboration and collegiality.
- A place for introversion and exhibition.
- A place to embrace the outdoors and shelter from the Atlantic weather.
- A place to feel safe and supported, and be wild and independent.
- A place to engage with ecology, sustainability, biodiversity and scientific research.



A liberating connection with nature and landscape.









1. Use concrete tanks as foundations



5. Build between hatchery building and lough



2. Convert water tower



3. Build inside circular tanks



4. Build in the woods eg. next to the pond

Possible build locations considered

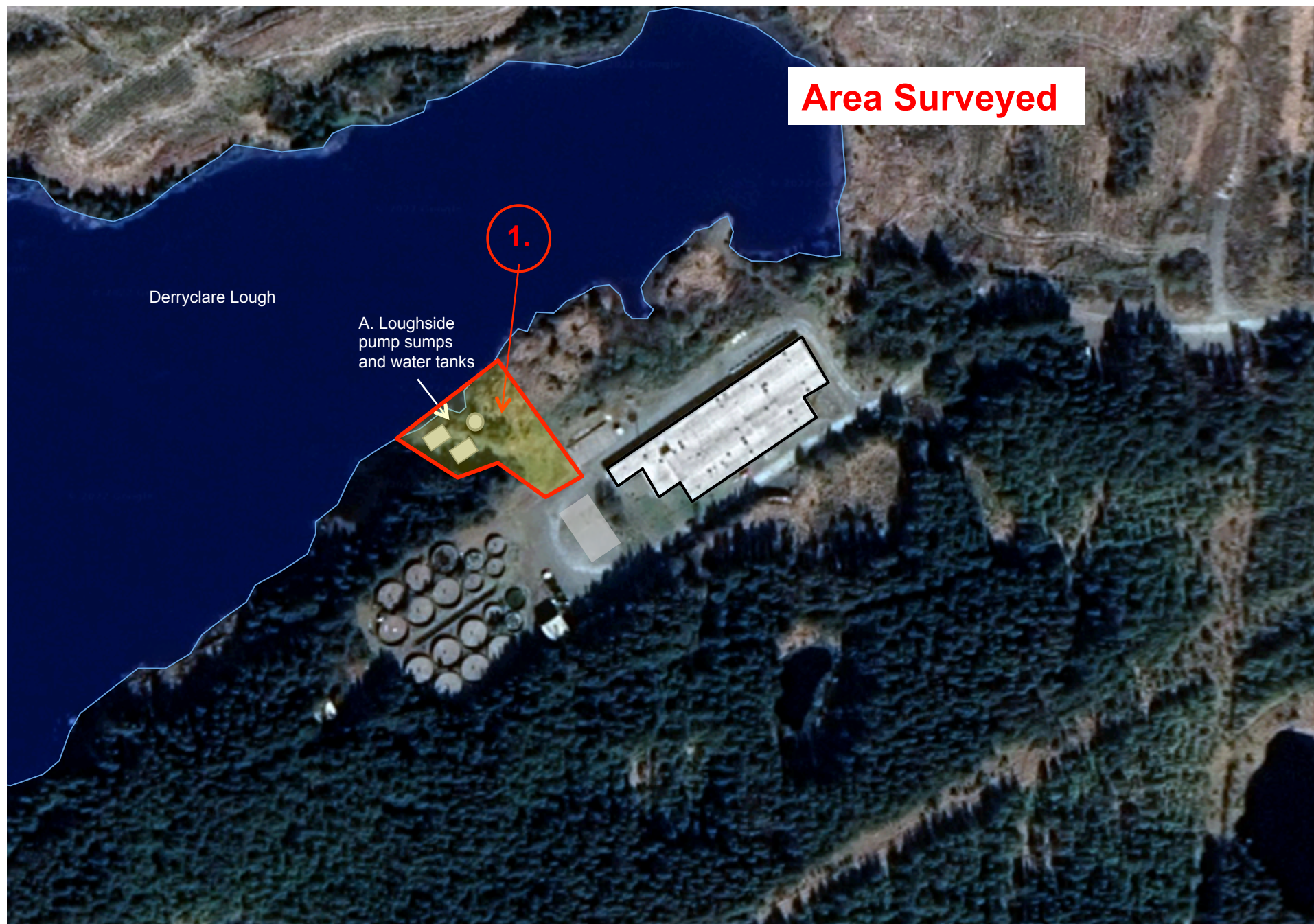


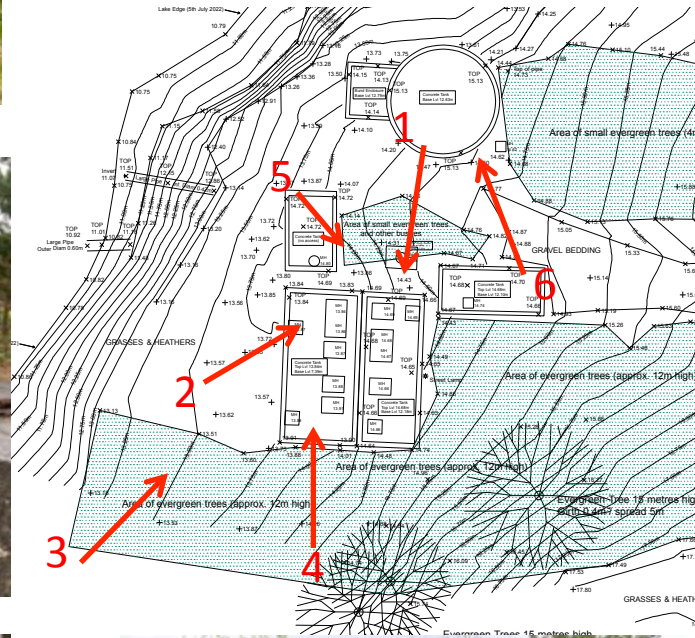
1. Use concrete tanks as foundations



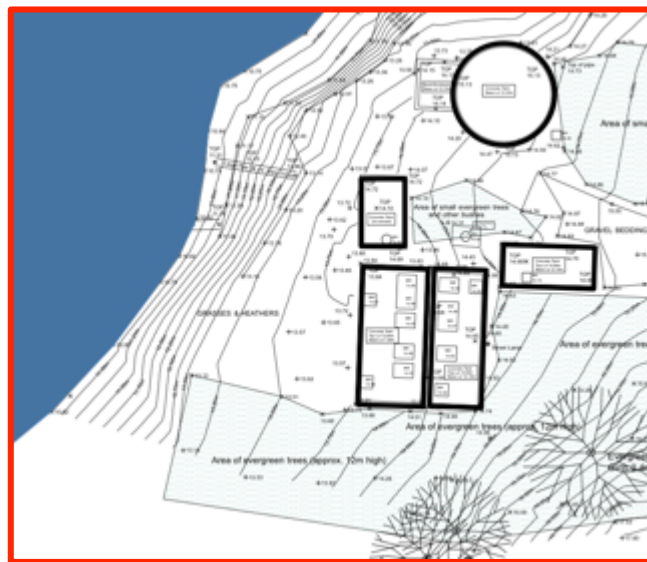
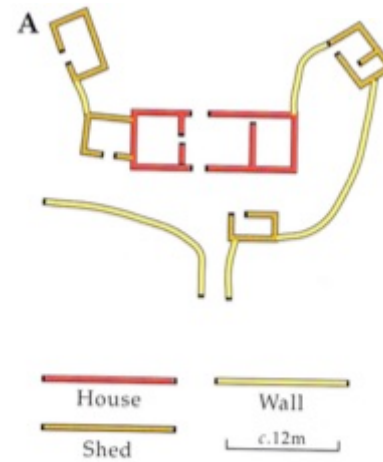
Rational;

- Can use concrete tanks as foundation structures
- Tanks are a suitable size
- Arrangement of tanks can create a clachan
- Best views from this location
- Easy connection to lough and woods from here
- Universal Access possible
- Set against a hill, as seen from afar
- Close to hatchery and car park, yet has own identity
- Magical setting, and connection to water









1



Build using environmentally low impact materials.

Off site construction where possible.

Avoid plastics, PVC, MDF and other off-gassing materials

2



Use high levels of insulation.

Possibly Connemara sheep's wool if available.

3



Airtight construction with controlled ventilation

4



Shelter from the wind, open to the sun.

5



Generate energy from renewables;

Photo-voltaic panels

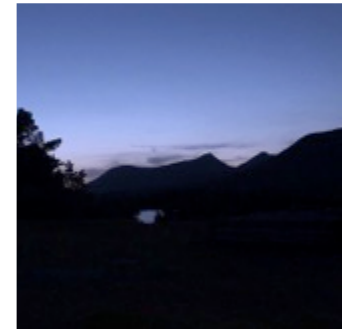
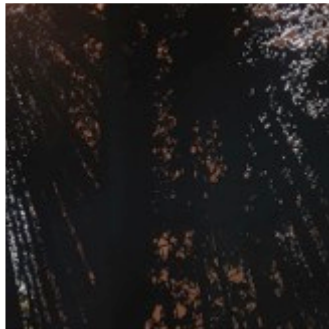
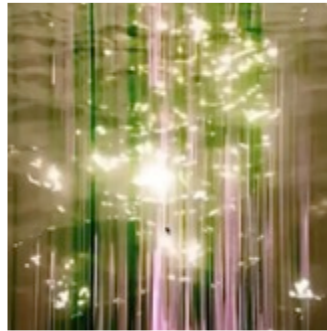
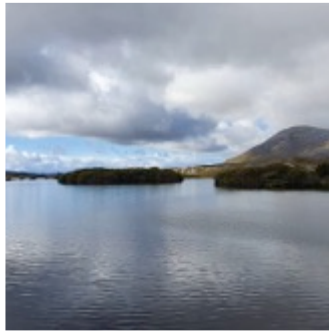
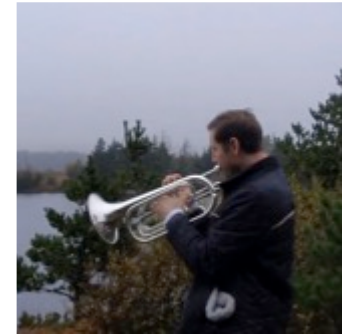
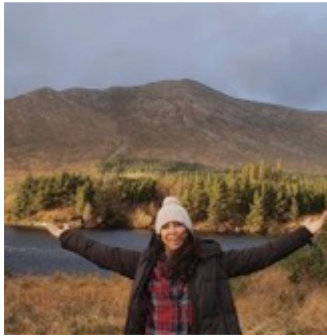
Ground or water source heat pumps

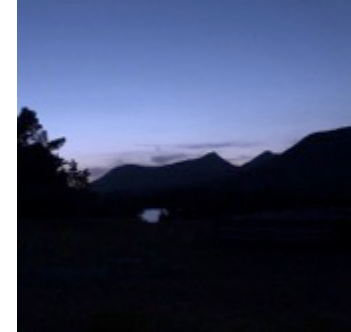
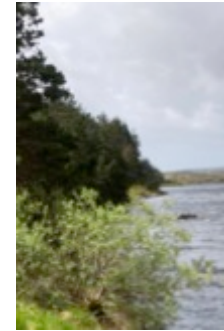
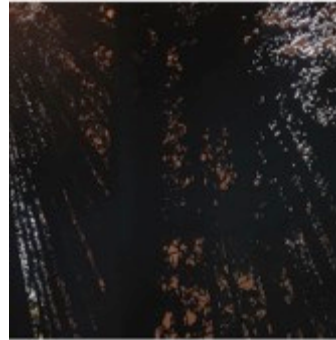
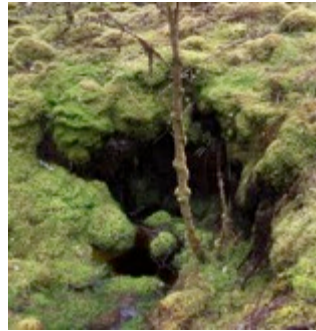
6

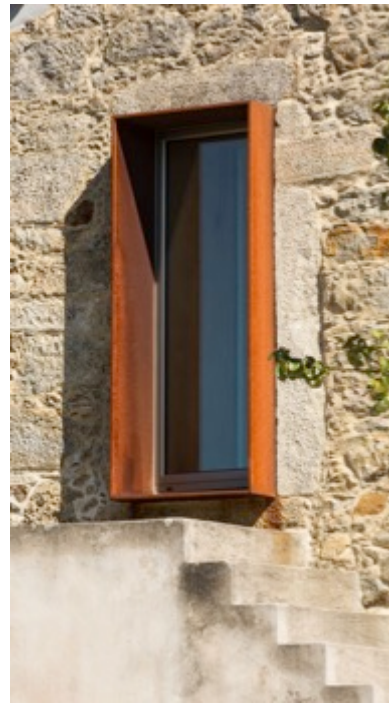


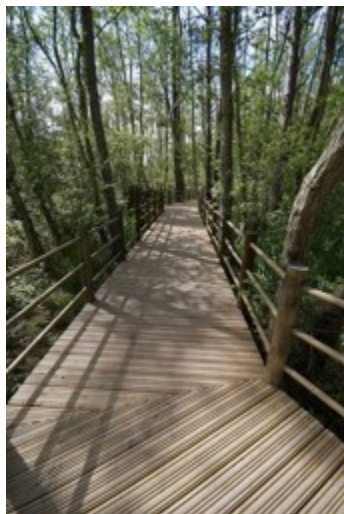
Promote biodiversity

Minimise impact on the land.



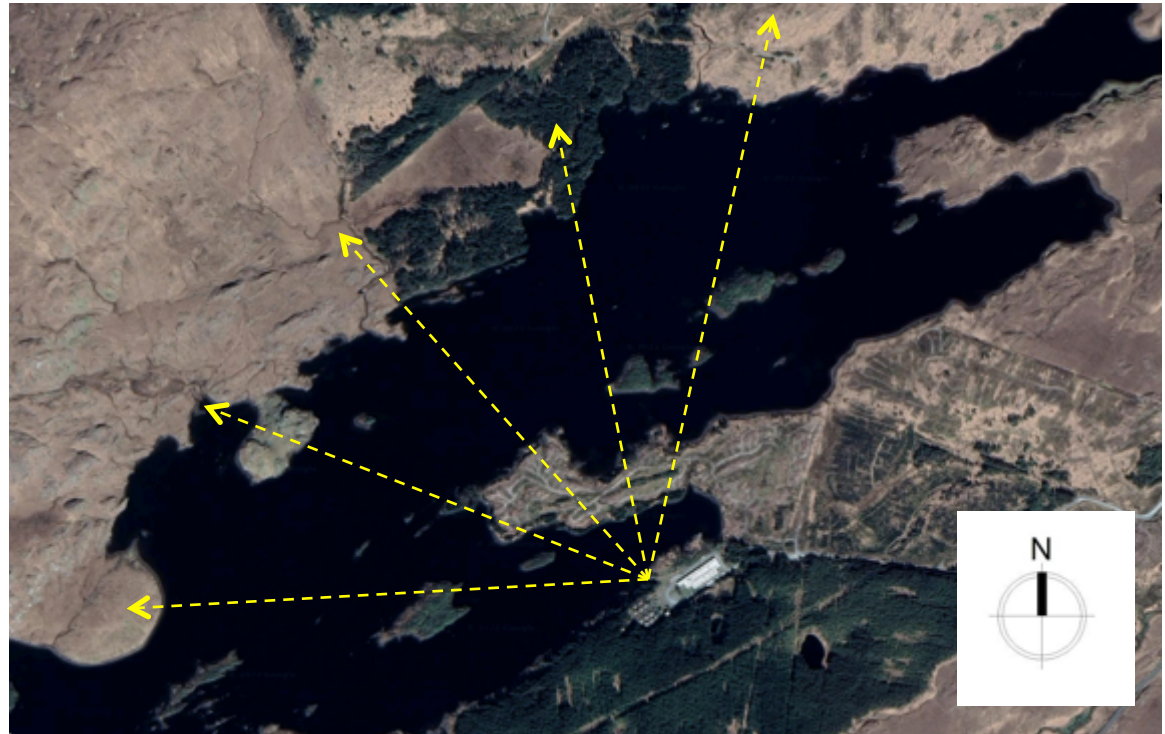
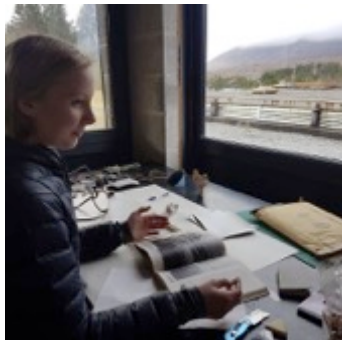






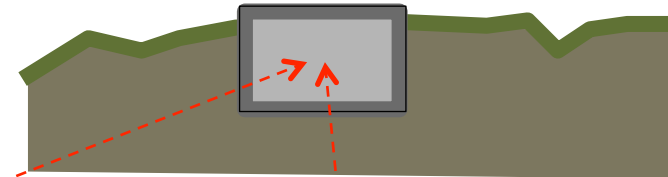
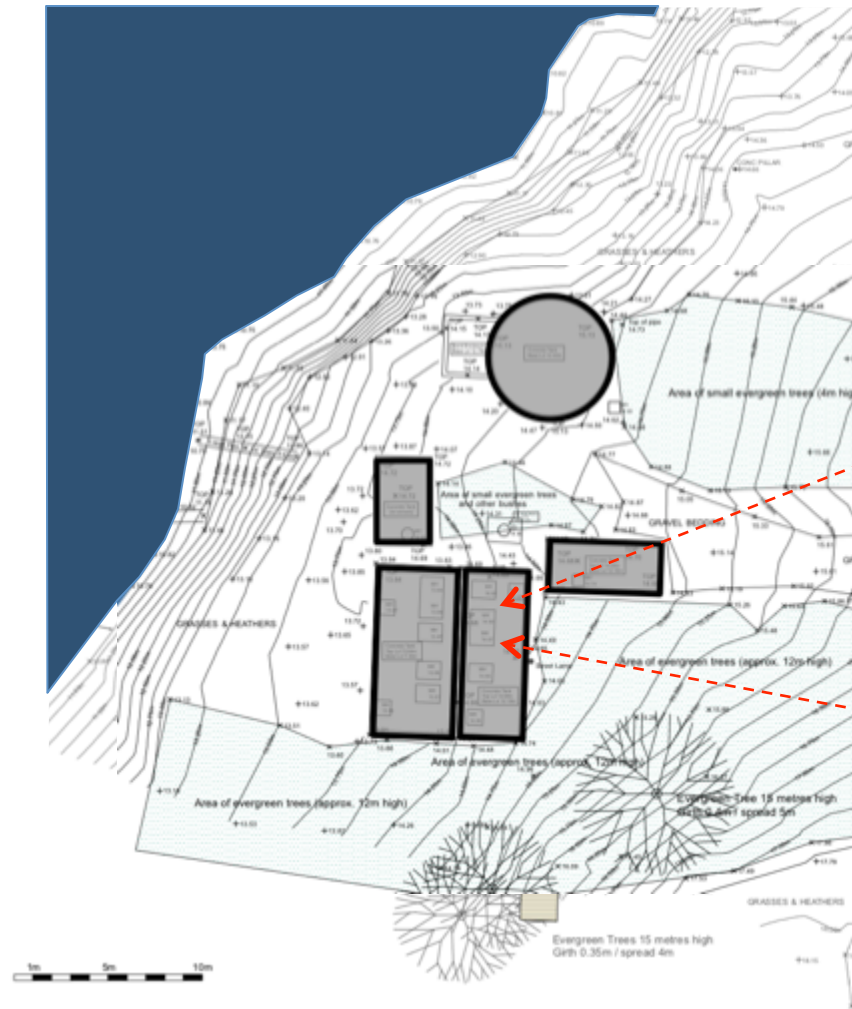


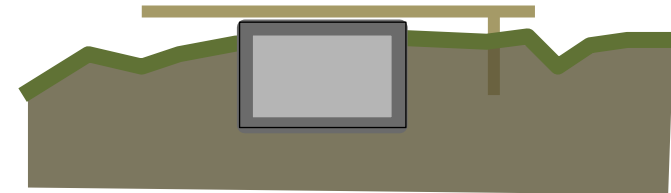
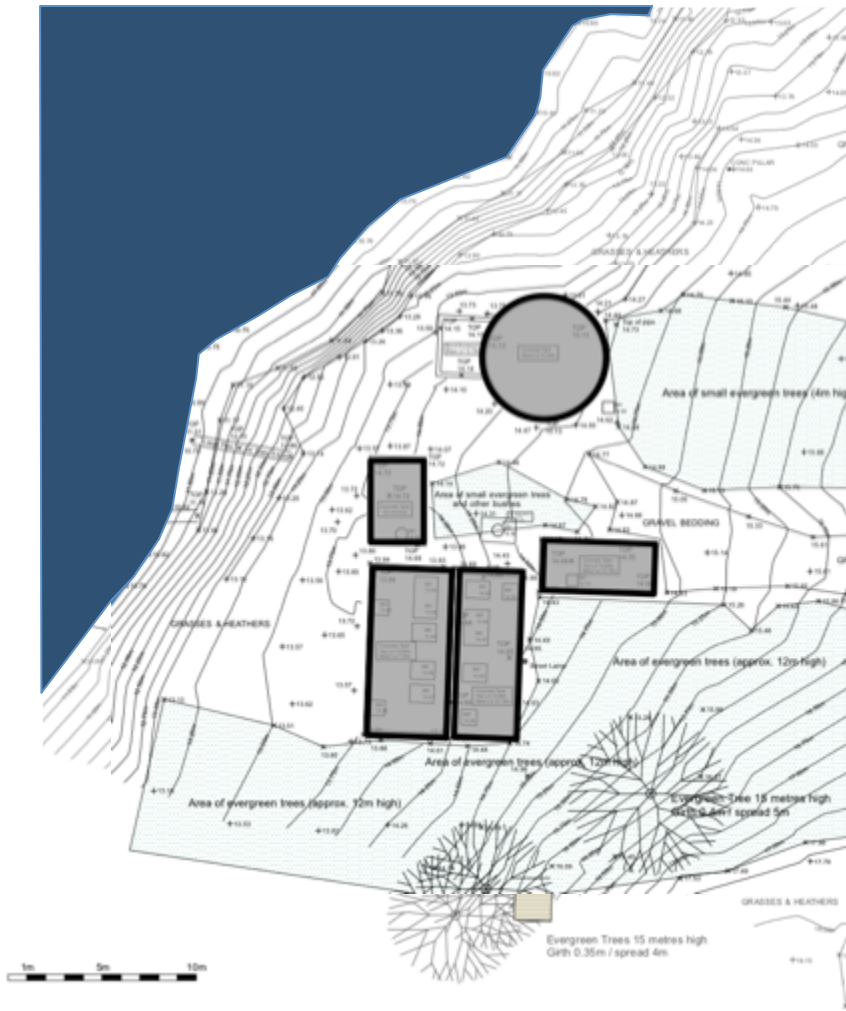




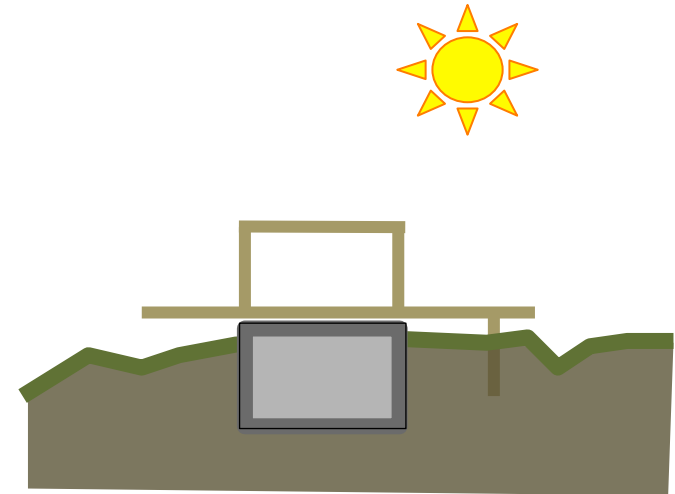
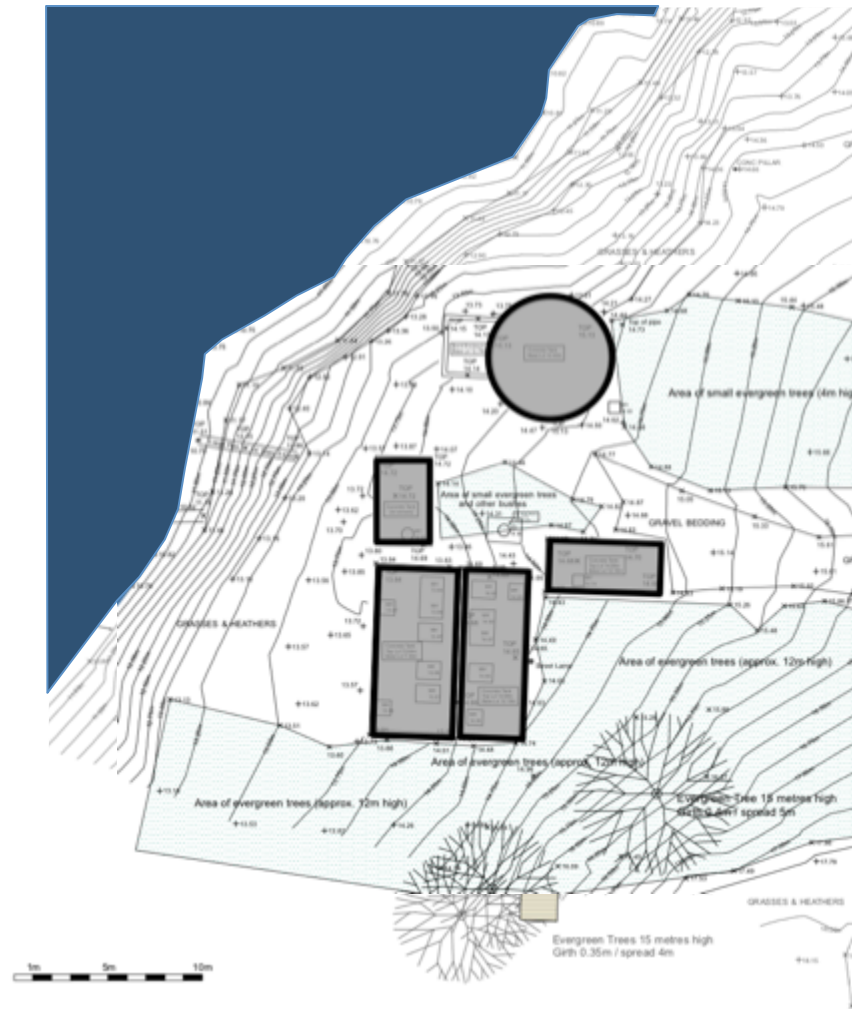


Environmentally friendly
.....and saves money.

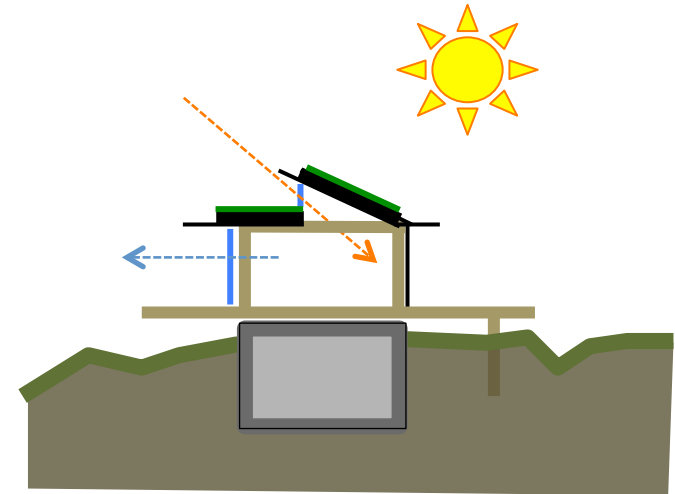
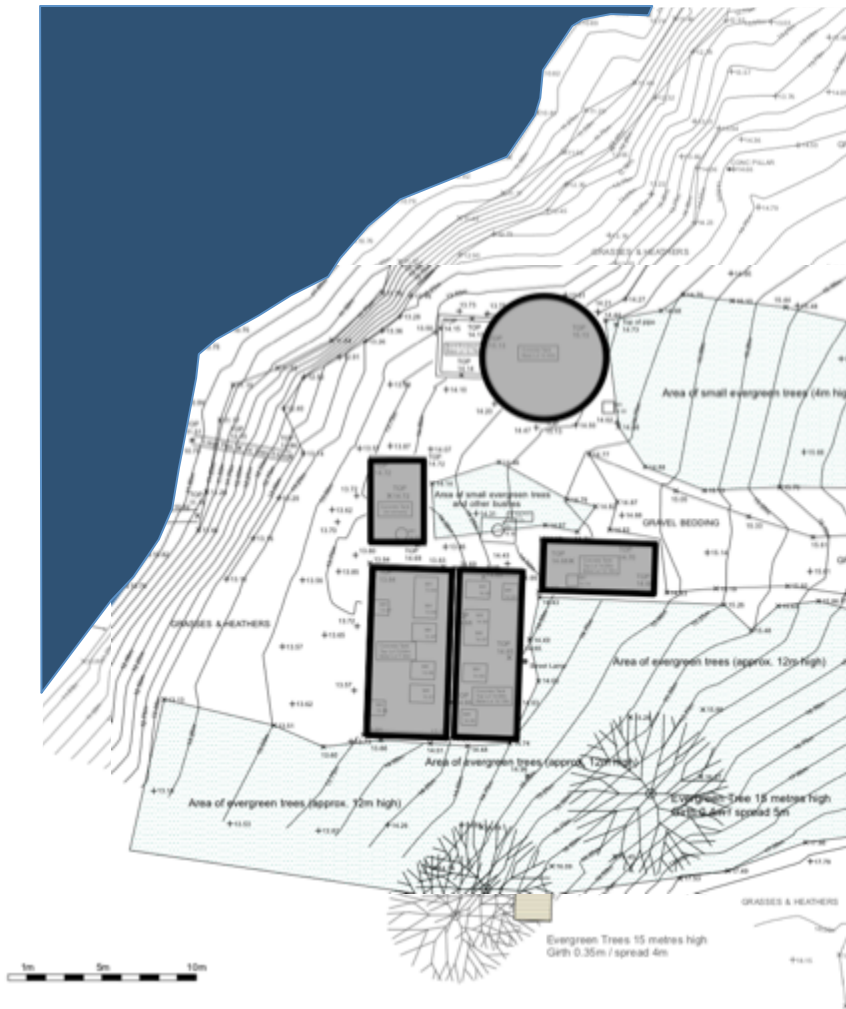




Platform connection to concrete tanks .



Off-site timber frame installation.



Roof, walls, insulation and windows.

